

FINISHES / NOTES

15-30mm THICKNESS

GRADE 6063T6
MILL FINISH

GRADE 6063T6. MILL FINISH
VARIABLE BRACKETS AND SIZES

PROFILE 6803, GRADE 6063T6.
BLACK ANODISED FINISH

GRADE 6063T6. MILL FINISH WITH PVC SPACER.
CLIPS FIXED TO PANEL SYSTEM WITH KEIL
UNDERCUT ANCHORS AND DISTANCE HOLDERS

GRADE 6063T6. MILL FINISH WITH PVC SPACER

GRADE 3005H47. MILL FINISH

5mm WOOD PANEL REFLECTION BOARD BACKING
WITH 8-10mm ACRYLIC LED PANEL

KEY COMPONENT LEGEND

- (A) LUCEM TRANSLUCENT CONCRETE
- (B) VERTICAL ALUMINIUM T SECTION SUPPORT
- (C) ALUMINIUM BRACKET WITH ISOLATION PAD
- (D) HORIZONTAL RAIL PROFILE
- (E) 50MM TOP CLIP WITH ADJUSTABLE SCREW
- (F) 50MM INTERMEDIATE / BASE CLIP
- (G) RESTRAINT CLIPS
- (H) LUCEM LED PANEL SYSTEM

(1) INDICATIVE FINISHES NOT BY TELLING Eg :

- INSULATION
- AIR/MOISTURE BARRIER
- BLOCKWORK / CONCRETE
- INTERNAL FINISHES
- GLAZING SYSTEMS AND SEALS
- CLOSURE TRIMS / FLASHINGS
- EXTERIOR SHEATHING

Rev.	Date	Comments

TellingArchitectural

Telling Architectural Ltd
7 The Dell
Enterprise Drive
Four Ashes
Wolverhampton
WV10 7DF

Tel : 01902 797 700
Fax : 01902 797 720

© Telling Architectural Ltd
Do not scale from this drawing. If in doubt ask

Material :
LUCEM CONCRETE AND LED

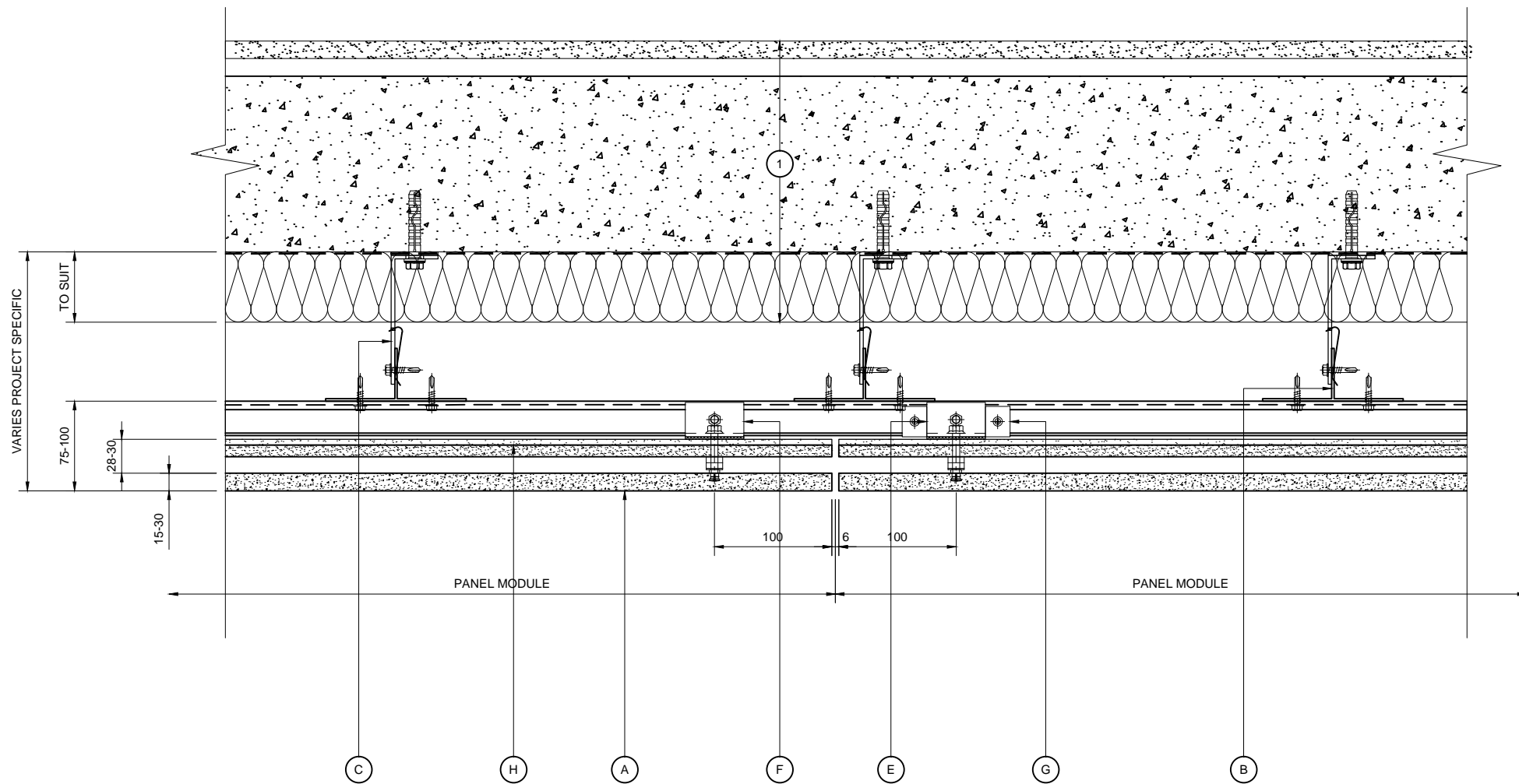
Series :
**LED SERIES
HORIZONTAL RAIL &
VERTICAL T TO CONCRETE**

Drawing Title :
**SYSTEM COMPONENTS
AND NOTES**

Scale : Drawn : LK
Date : FEB 15

Size	Drawing No.	Rev.
A3	LUC-LED-INDEX	





HORIZONTAL SECTION

KEY COMPONENT LEGEND

- (A) LUCEM TRANSLUCENT CONCRETE
- (B) VERTICAL ALUMINIUM T SECTION SUPPORT
- (C) ALUMINIUM BRACKET WITH ISOLATION PAD
- (D) HORIZONTAL RAIL PROFILE
- (E) 50MM TOP CLIP WITH ADJUSTABLE SCREW
- (F) 50MM INTERMEDIATE / BASE CLIP
- (G) RESTRAINT CLIPS
- (H) LUCEM LED PANEL SYSTEM

- (1) INDICATIVE FINISHES NOT BY TELLING Eg :

- INSULATION
- AIR/MOISTURE BARRIER
- BLOCKWORK / CONCRETE
- INTERNAL FINISHES
- GLAZING SYSTEMS AND SEALS
- CLOSURE TRIMS / FLASHINGS
- EXTERIOR SHEATHING

Rev.	Date	Comments
------	------	----------



Telling Architectural Ltd
 7 The Dell
 Enterprise Drive
 Four Ashes
 Wolverhampton
 WV10 7DF
 Tel : 01902 797 700
 Fax : 01902 797 720

© Telling Architectural Ltd
 Do not scale from this drawing. If in doubt ask

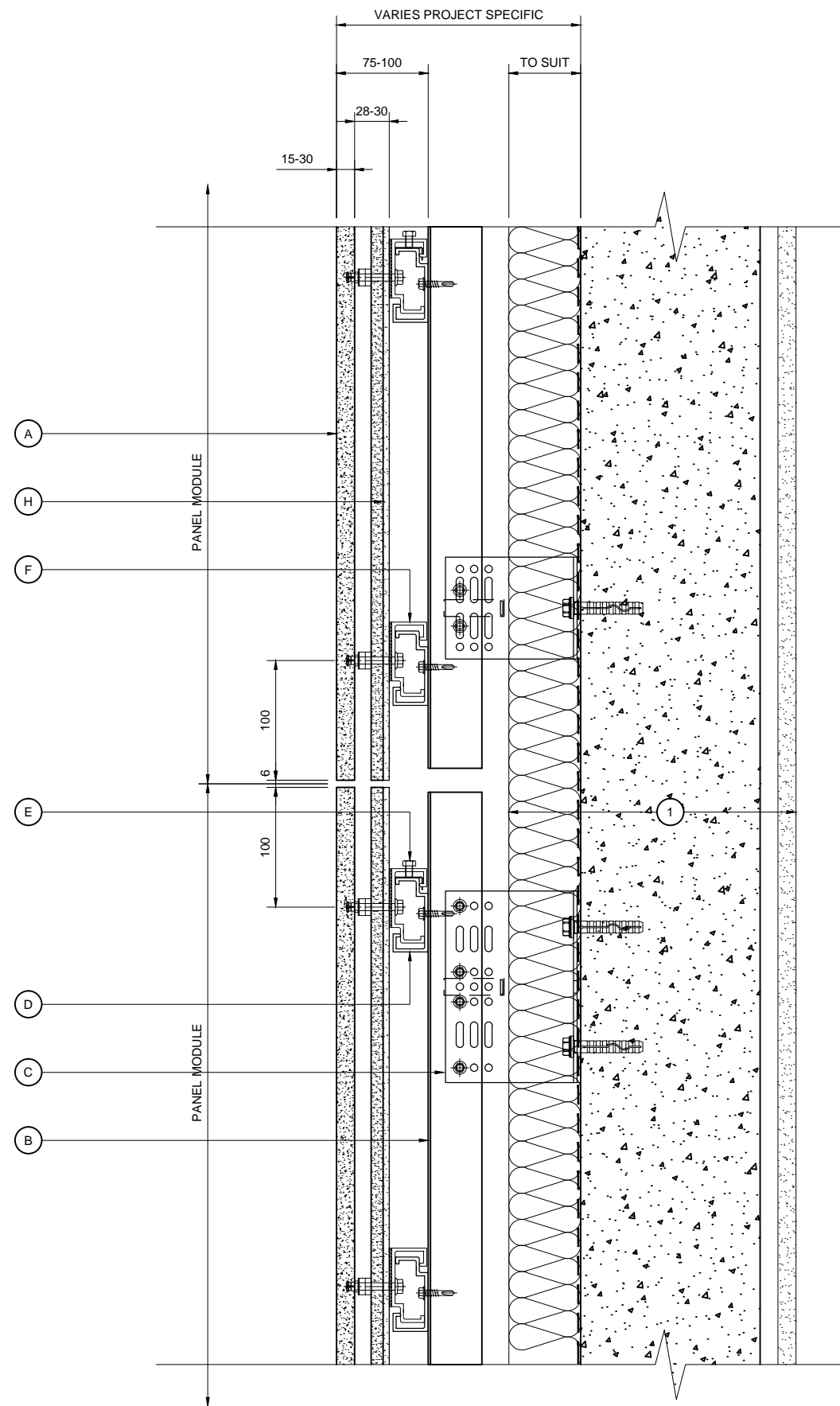
Material :
LUCEM CONCRETE AND LED

Series :
**LED SERIES
 HORIZONTAL RAIL &
 VERTICAL T TO CONCRETE**

Drawing Title :
HORIZONTAL SECTION

Scale : 1 : 5	Drawn : LK Date : FEB 15
------------------	-----------------------------

Size	Drawing No.	Rev.
A3	LUC-LED01	



VERTICAL SECTION

KEY COMPONENT LEGEND

- (A) LUCEM TRANSLUCENT CONCRETE
- (B) VERTICAL ALUMINIUM T SECTION SUPPORT
- (C) ALUMINIUM BRACKET WITH ISOLATION PAD
- (D) HORIZONTAL RAIL PROFILE
- (E) 50MM TOP CLIP WITH ADJUSTABLE SCREW
- (F) 50MM INTERMEDIATE / BASE CLIP
- (G) RESTRAINT CLIPS
- (H) LUCEM LED PANEL SYSTEM

- (1) INDICATIVE FINISHES NOT BY TELLING Eg :

- INSULATION
- AIR/MOISTURE BARRIER
- BLOCKWORK / CONCRETE
- INTERNAL FINISHES
- GLAZING SYSTEMS AND SEALS
- CLOSURE TRIMS / FLASHINGS
- EXTERIOR SHEATHING

Rev.	Date	Comments
------	------	----------



Telling Architectural Ltd
 7 The Dell
 Enterprise Drive
 Four Ashes
 Wolverhampton WV10 7DF
 Tel : 01902 797 700
 Fax : 01902 797 720

© Telling Architectural Ltd
 Do not scale from this drawing. If in doubt ask

Material :
LUCEM CONCRETE AND LED

Series :
**LED SERIES
 HORIZONTAL RAIL &
 VERTICAL T TO CONCRETE**

Drawing Title :
VERTICAL SECTION

Scale : 1 : 5	Drawn : LK
	Date : FEB 15

Size	Drawing No.	Rev.
A3	LUC-LED02	